

# Backlash-free Metal Bellows Couplings · Assembly Instructions

## Assembly

Clean and degrease shaft ends and bores in hubs and check the tolerances. Insert both shaft ends into the hubs of the Metal Bellows Coupling. Firmly tighten the screws after examining the axial installation dimensions. The tightening torque of the screws and the maximum approved misalignment should not be exceeded (refer to the appropriate technical data table).

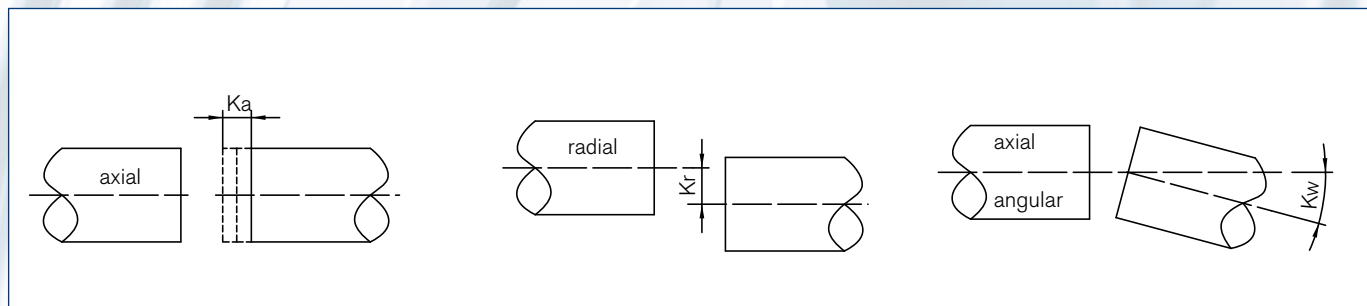
## Disassembly

After loosening the backlash-free shaft hub connections, the drive can be pulled apart and the metal bellows coupling can be removed. Keyless bushings of series AK are forced off with a socket head cap screw.

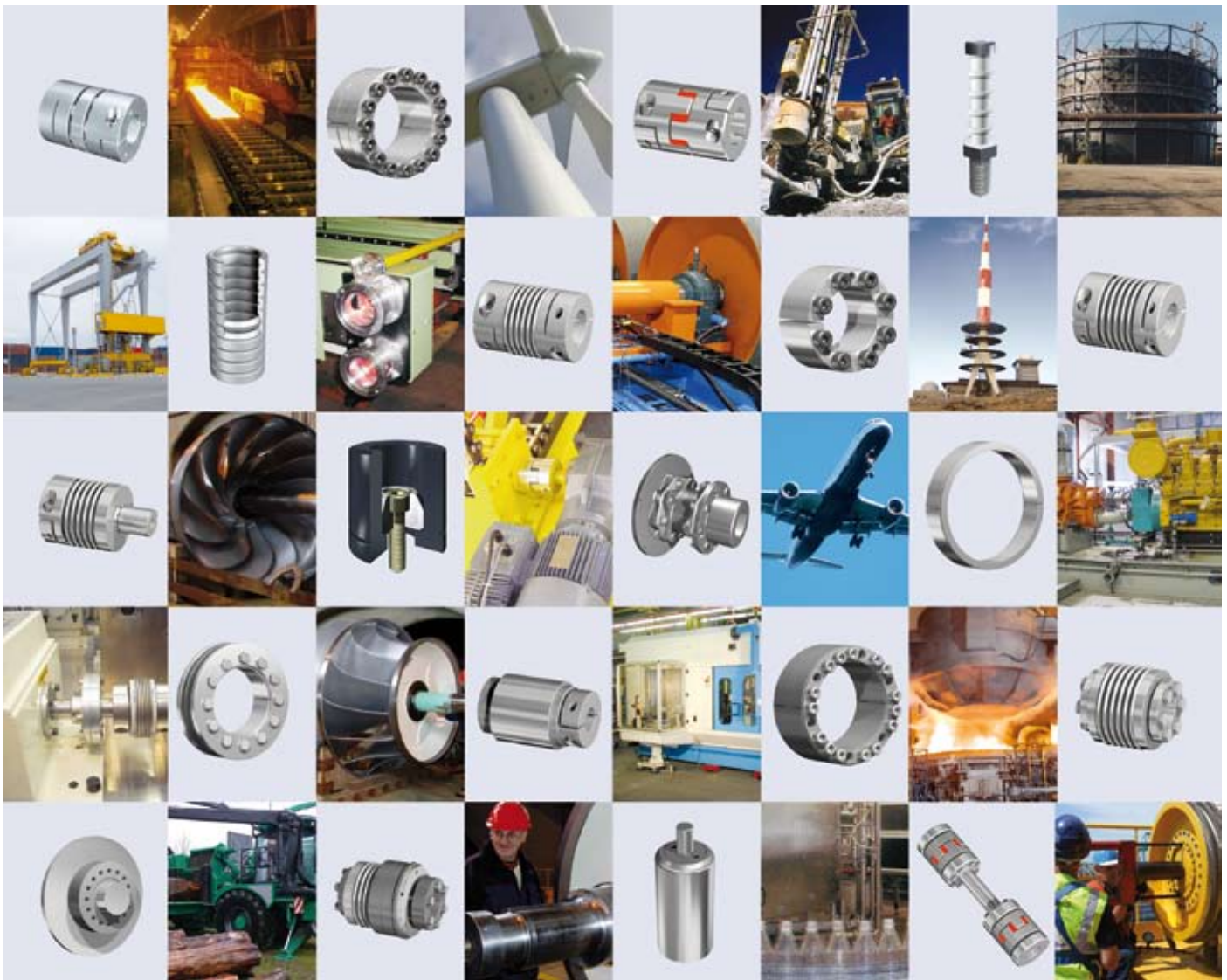
## Alignment

If several types of misalignment occur simultaneously, none of them must reach the maximal value but must be adjusted. The sum of all actual misalignments must not exceed 100 % (percentage of the maximum value). The diagram below shows how to adjust. The more precise the alignment, the more reserves are available to handle additional misalignments during the operation. This will have an advantageous effect on the durability, quietness and the accuracy of transmission.

**Please ask for our detailed assembly instructions.**







**Check out the respective catalogue for further technical details**

All technical details and information is non-binding and cannot be used as a basis for legal claims. The user is obligated to determine whether the represented products meet his requirements. We reserve the right at all times to carry out modifications in the interests of technical progress. Upon the issue of this catalogue all previous brochures and questionnaires on the products displayed are no longer valid.

**RINGFEDER POWER TRANSMISSION USA CORPORATION**

165 Carver Avenue, P.O. Box 691 Westwood, NJ 07675, USA · Toll Free: +1 888 746-4333 · Phone: +1 201 666 3320 · Fax: +1 201 664 6053

E-mail: [sales.usa@ringfeder.com](mailto:sales.usa@ringfeder.com) · E-mail: [sales.usa@gerwah.com](mailto:sales.usa@gerwah.com)