

Dimensions

| | | |
|--------------------------------|---|-----------------------------------|
| $\varnothing A$ | = | Outer diameter |
| $\varnothing D1\ H7$ | = | Bore diameter |
| $\varnothing D2\ H7$ | = | Bore diameter |
| $\varnothing H$ | = | Clearance diameter |
| C | = | Guided length shaft bore |
| G | = | Clamping screws |
| I | = | Radius to clamp screw |
| K | = | Radius to clamp screw |
| L ± 0.08 | = | Total length |
| C₁ | = | Bore tolerance for D ₁ |
| C₂ | = | Bore tolerance for D ₂ |



Dimensions

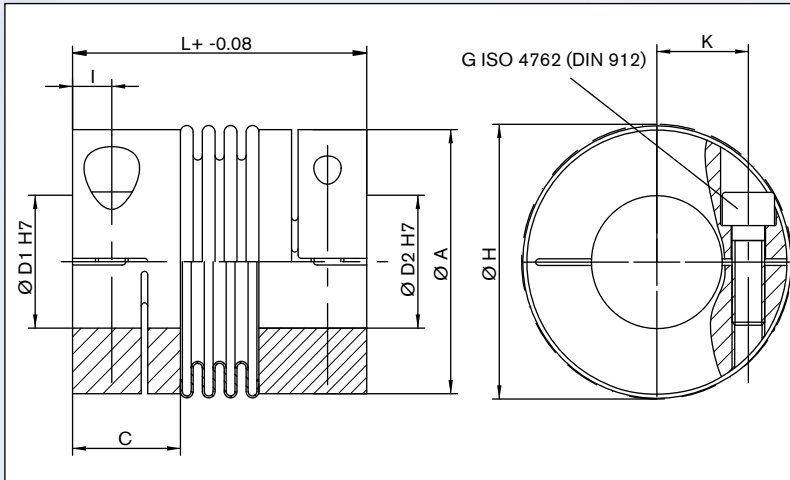
| Size | L | $\varnothing A$ | $\varnothing H$ | $\varnothing D1\ H7$ | C ₁ | $\varnothing D2\ H7$ | C ₂ | C | K | I | G | T _{KN} |
|------|-------------|-----------------|-----------------|----------------------|----------------|----------------------|----------------|------|------|------|-----|-----------------|
| | ± 0.079 | Inch | | | | | | | | | | lb-in |
| 18 | 2.48 | 1.77 | 1.89 | 0.39-0.98 | -0 +0.001 | 0.39-0.98 | -0 +0.001 | 0.79 | 0.71 | 0.24 | M5 | 159 |
| 30 | 2.56 | 2.17 | 2.20 | 0.39-0.98 | | 0.39-0.98 | | 0.98 | 0.79 | 0.31 | M6 | 266 |
| 60 | 3.07 | 2.52 | 2.64 | 0.55-1.26 | | 0.55-1.26 | | 1.14 | 0.94 | 0.39 | M8 | 531 |
| 80 | 3.54 | 3.15 | 3.31 | 0.79-1.57 | | 0.79-1.57 | | 1.30 | 1.10 | 0.47 | M10 | 708 |
| 150 | 3.54 | 3.15 | 3.31 | 0.79-1.57 | | 0.79-1.57 | | 1.30 | 1.10 | 0.47 | M10 | 1328 |
| 200 | 3.90 | 3.54 | 3.66 | 0.98-1.73 | | 0.98-1.73 | | 1.50 | 1.22 | 0.51 | M12 | 1770 |
| 300 | 4.09 | 4.33 | 4.33 | 1.26-1.97 | | 1.26-1.97 | | 1.50 | 1.54 | 0.51 | M12 | 2655 |
| 500 | 4.37 | 4.69 | 4.80 | 1.57-2.36 | 1.57-2.36 | 1.61 | 1.69 | 0.59 | M14 | 4426 | | |

Moment of inertia and weight (mass) are calculated with reference to the largest bore size.

Example:

AKN

| Series Size Length | Bore- $\varnothing D1$ | Bore- $\varnothing D2$ | Further details* |
|--------------------------|---------------------------|---------------------------|---------------------|
| AKN 150 | 1.125 | 1.375 | XX |



Sectional view

Technical Data

| | | |
|-------------|---|------------------------------------|
| T_{KN} | = | Nominal torque |
| C_t | = | Dynamic torsional stiffness |
| C_r | = | Radial spring stiffness |
| C_a | = | Axial spring stiffness |
| ΔKr | = | Max. approved misalignment radial |
| ΔKa | = | Max. approved misalignment axial |
| ΔKw | = | Max. approved misalignment angular |
| J | = | Moment of inertia |
| M_A | = | Tightening torque of screws |
| n_{max} | = | Max. rotational speed |

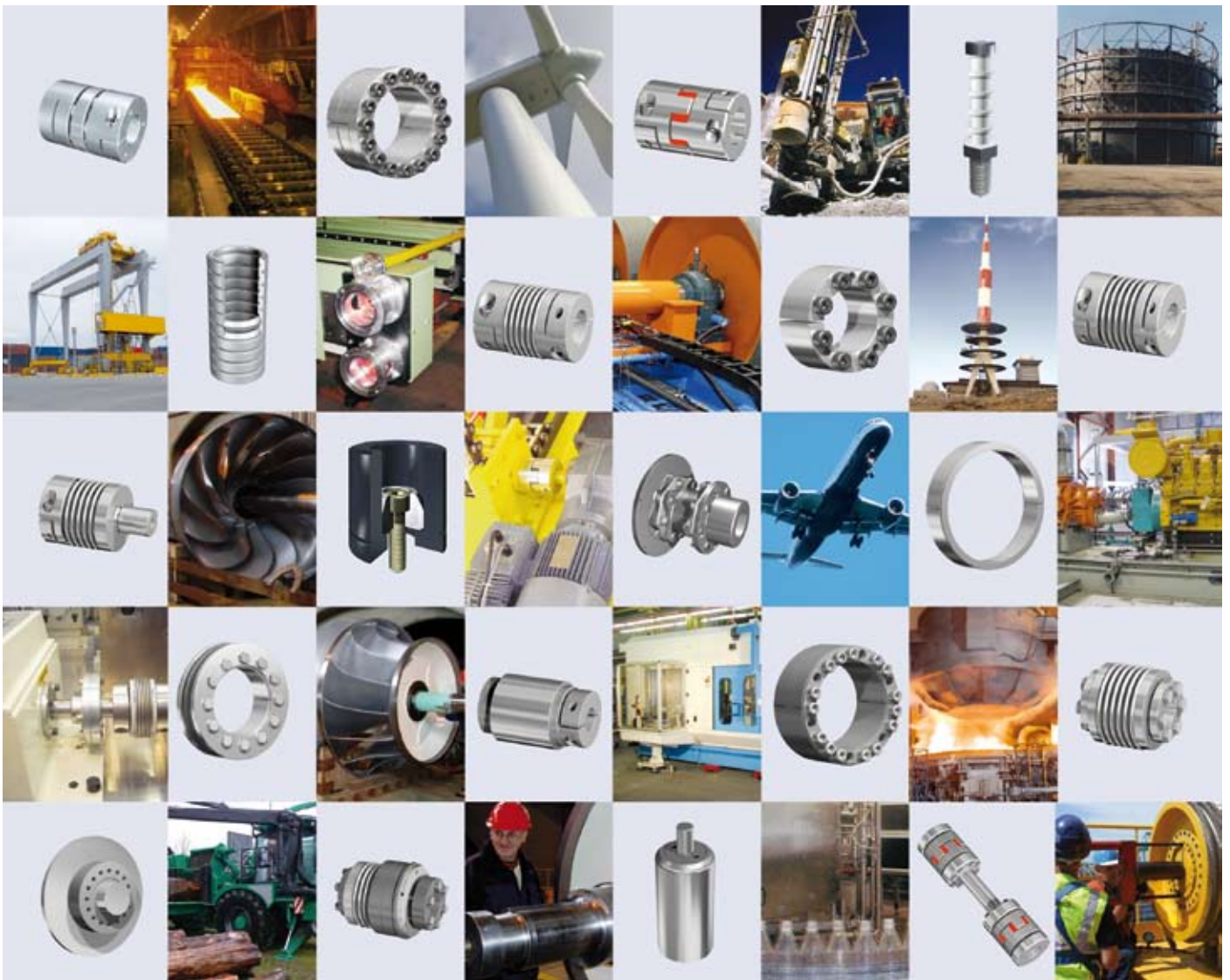
Technical Data

| Size | M_A | C_t | C_r | C_a | n_{max} | ΔKa | ΔKw | ΔKr | Weight | J |
|------|-------|------------------|------------------|-------|-----------|-------------|-------------|-------------|--------|------|
| | lb-in | 10^3 lb-in/rad | 10^3 lb-in/rad | | rpm | ± Inch | Degrees | Inch | | |
| 18 | 53 | 71 | 1770 | 443 | 12700 | 0.020 | 1.5 | 0.008 | 0.4 | 0.17 |
| 30 | 106 | 310 | 6373 | 443 | 10200 | 0.016 | 1 | 0.004 | 0.6 | 0.38 |
| 60 | 266 | 664 | 9737 | 797 | 8600 | 0.016 | 1 | 0.004 | 1.0 | 0.99 |
| 80 | 531 | 1151 | 10622 | 708 | 6800 | 0.016 | 1 | 0.008 | 2.2 | 2.97 |
| 150 | 752 | 1328 | 17703 | 1328 | 6800 | 0.016 | 1 | 0.008 | 2.2 | 2.97 |
| 200 | 885 | 1505 | 22129 | 1328 | 6300 | 0.016 | 1 | 0.008 | 2.6 | 4.92 |
| 300 | 1062 | 4426 | 55765 | 2478 | 5900 | 0.016 | 1 | 0.008 | 3.0 | 10.3 |
| 500 | 1682 | 6019 | 77894 | 885 | 4900 | 0.020 | 1 | 0.008 | 3.8 | 16.1 |

Fittings: Hubs: Standard fit H7
Keyways: Standard fit JS9

Materials: Hubs made of aluminium
Metal bellows made of stainless steel

Special designs : Coupling completely made of stainless steel (on request)
Keyway acc. to DIN 6885-1



Check out the respective catalogue for further technical details

All technical details and information is non-binding and cannot be used as a basis for legal claims. The user is obligated to determine whether the represented products meet his requirements. We reserve the right at all times to carry out modifications in the interests of technical progress. Upon the issue of this catalogue all previous brochures and questionnaires on the products displayed are no longer valid.

RINGFEDER POWER TRANSMISSION USA CORPORATION

165 Carver Avenue, P.O. Box 691 Westwood, NJ 07675, USA · Toll Free: +1 888 746-4333 · Phone: +1 201 666 3320 · Fax: +1 201 664 6053

E-mail: sales.usa@ringfeder.com · E-mail: sales.usa@gerwah.com