

## Dimensions

$\varnothing A$	=	Outer diameter total coupling
$\varnothing B$	=	Outer diameter Hub
$\varnothing D1 H7$	=	Bore diameter
$\varnothing D2 H7$	=	Bore diameter
$\varnothing T$	=	Pitch circle diameter
E	=	Overall length - relaxed condition
G	=	Screws
J	=	Coupling Body length - relaxed condition
$L \pm 0.08$	=	Total length
$C_1$	=	Bore tolerance for $D_1$
$C_2$	=	Bore tolerance for $D_2$



## Dimensions

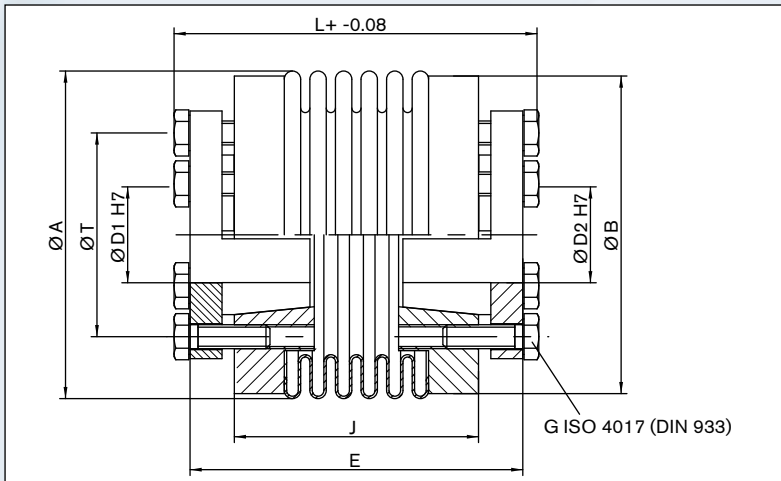
Size	L	$\varnothing A$	$\varnothing B$	$\varnothing T$	$\varnothing D1^{H7}$	$\varnothing D2^{H7}$	E	J	G
	$\pm 0.079$	Inch							mm
30	2.05/2.36	2.20	2.17	1.22/1.22	0.47-0.79	0.47-0.79	1.77/2.09	1.18/1.50	6xM4
60	2.48/2.87	2.60	2.52	1.46/1.46	0.59-0.98	0.59-0.98	2.17/2.56	1.38/1.81	6xM6
80	3.11/3.58	3.23	3.15	2.01/2.01	0.94-1.38	0.94-1.38	2.83/3.27	1.93/2.40	6xM6
150	3.11/3.58	3.23	3.15	2.01/2.01	0.94-1.38	0.94-1.38	2.83/3.31	1.93/2.40	6xM6
200	3.15/3.66	3.54	3.54	2.01/2.20	0.94-1.57	0.94-1.57	2.83/3.35	1.97/2.48	6xM6
300	3.66/4.09	4.33	4.29	2.44/2.95	0.98-1.97	0.98-1.97	3.15/3.66	2.20/2.64	6xM8
500	4.02/4.45	4.80	4.69	3.15/3.15	1.57-2.17	1.57-2.17	3.70/4.13	2.40/2.83	6xM8
800	6.69	6.18	5.51	3.62/3.94	1.97-2.76	1.97-2.76	5.91	4.33	6xM16
1400	6.69	6.18	5.51	3.62/3.94	1.97-2.76	1.97-2.76	5.91	4.33	6xM16
3000	8.11	6.18	5.51	4.53	2.76-3.15	2.76-3.15	7.48	5.91	6xM12
5000	8.11	8.19	6.85	3.94/4.92	2.36-3.35	2.36-3.35	7.32	5.75	6xM16

Moment of inertia and weight (mass) are calculated with reference to the largest bore size.

## Example:

AK

Series Size Length	Bore- $\varnothing D1$	Bore- $\varnothing D2$	Further details*
AK 150/3.15	1.125	1.375	XX



Sectional view

### Technical Data

- T<sub>KN</sub>** = Nominal torque
- C<sub>t</sub>** = Dynamic torsional stiffness
- Cr** = Radial spring stiffness
- Ca** = Axial spring stiffness
- ΔKr** = Max. approved misalignment radial
- ΔKa** = Max. approved misalignment axial
- ΔKw** = Max. approved misalignment angular
- J** = Moment of inertia
- M<sub>A</sub>** = Tightening torque of screws
- n<sub>max</sub>** = Max. rotational speed

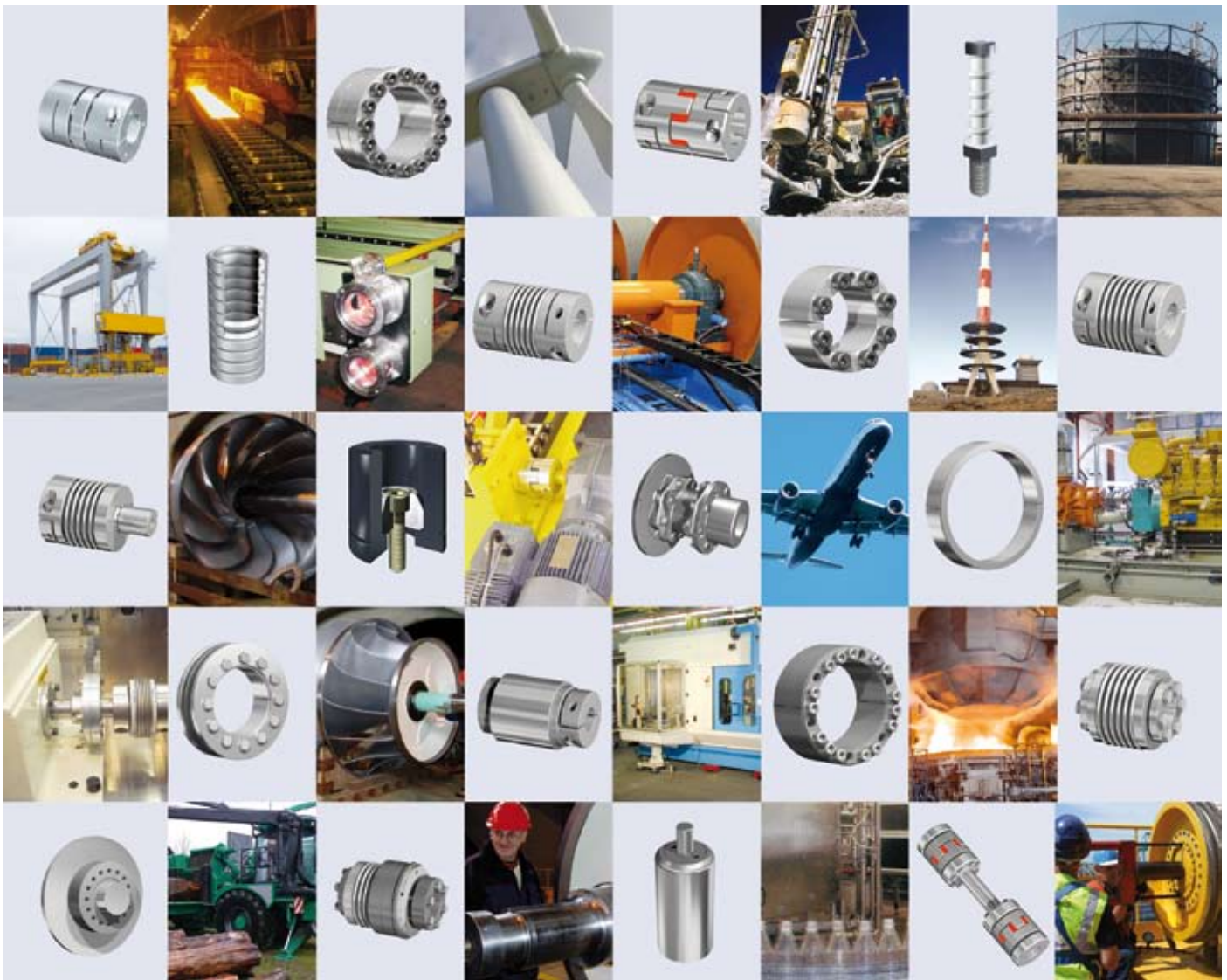
### Technical Data

Size	T <sub>KN</sub>	M <sub>A</sub>	C <sub>t</sub>	Cr	Ca	n <sub>max</sub>	Δ Ka	Δ Kw	Δ Kr	Weight	J
	lb-in	10 <sup>3</sup> lb-in/rad	10 <sup>3</sup> lb-in/rad	10 <sup>3</sup> lb-in/rad	rpm	± Inch	Degrees	Imch	lbs	lb-in <sup>2</sup>	
30	266	27	310/221	6373/1947	443/266	11000	0.016/0.020	1/1.5	0.004/0.008	0.9	0.51
60	531	75	664/443	9736779/2921034	797/443	9100	0.016/0.020	1/1.5	0.004/0.008	1.8	0.82
80	708	89	1151/664	10622/3541	708/443	7000	0.016/0.020	1/1.5	0.008/0.008	2.9	2.22
150	1328	124	1328/885	17703/5311	1328/752	7000	0.016/0.020	1/1.5	0.008/0.008	2.9	2.22
200	1770	124	1505/1062	22129/3983	1328/752	6700	0.016/0.020	1/1.5	0.008/0.008	3.5	2.97
300	2655	159	4426/2478	55765/13277	2478/1328	5200	0.016/0.020	1/1.5	0.008/0.008	7.5	7.96
500	4426	230	6019/2744	77894/8852	885/752	4600	0.020/0.039	1/1.5	0.008/0.008	10	19.6
800	7081	398	6727	4514	1682	3700	0.039	1.5	0.008	22	89
1400	12392	708	11507	6285	2478	3700	0.039	1.5	0.008	22	89
3000	26555	752	24785	26112	2744	2800	0.039	1.5	0.008	33	164
5000	44258	1859	42488	43550	4514	2800	0.039	1.5	0.008	46	212

**Fittings:** Hubs: Standard fit H7

**Materials:** Hubs made of aluminium (Size 30 – 500)  
Hubs made of steel (Size 800 – 5000)  
Metal bellows made of stainless steel  
Locking device made of steel

**Special designs :** Coupling completely made of stainless steel (on request)



**Check out the respective catalogue for further technical details**

All technical details and information is non-binding and cannot be used as a basis for legal claims. The user is obligated to determine whether the represented products meet his requirements. We reserve the right at all times to carry out modifications in the interests of technical progress. Upon the issue of this catalogue all previous brochures and questionnaires on the products displayed are no longer valid.

**RINGFEDER POWER TRANSMISSION USA CORPORATION**

165 Carver Avenue, P.O. Box 691 Westwood, NJ 07675, USA · Toll Free: +1 888 746-4333 · Phone: +1 201 666 3320 · Fax: +1 201 664 6053

E-mail: [sales.usa@ringfeder.com](mailto:sales.usa@ringfeder.com) · E-mail: [sales.usa@gerwah.com](mailto:sales.usa@gerwah.com)