

Sectional view

Technical Data

- T_{KN} = Nominal torque
- C_t = Dynamic torsional stiffness
- ΔKr = Max. approved misalignment radial
- ΔKa = Max. approved misalignment axial
- ΔKw = Max. approved misalignment angular
- J = Moment of inertia
- M_A = Tightening torque of screws
- n_{max} = Max. rotational speed

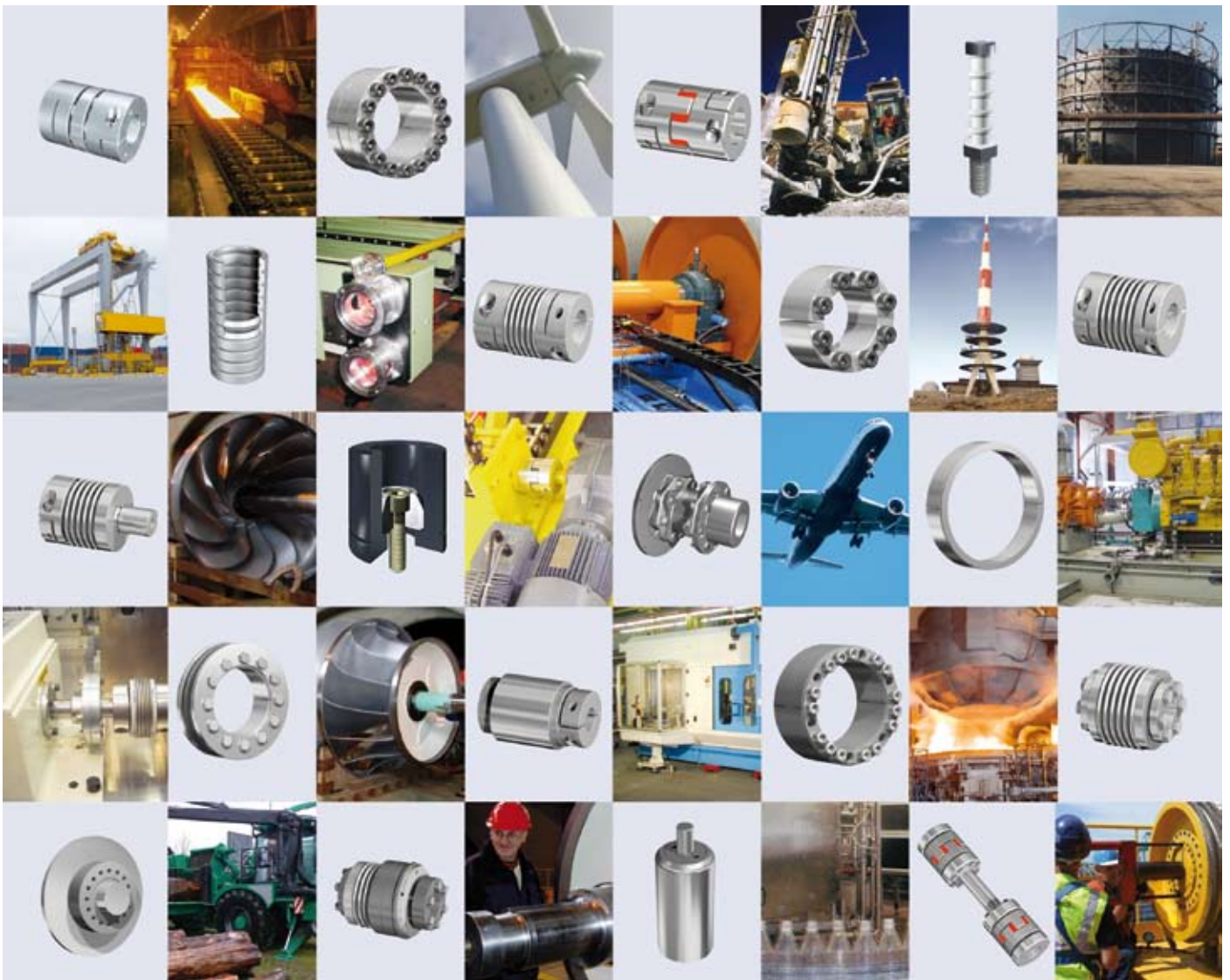
Technical Data

Size	T_{KN}	M_A	C_t	n_{max}	ΔKa	ΔKw	ΔKr	Weight	J
	lb-in		103 lb-in/rad	rpm	± Inch	Degrees	Inch		
4	4	3	2213/1682/1328	15000	0.008/0.012/0.016	1.2/2/2	0.004/0.006/0.008	20	0.89
9	8	3	4426/3364/2655	15000	0.008/0.012/0.016	1.2/2/2	0.004/0.006/0.008	20/22/24	0.89/0.99/1.09
15	13	7	6639/6196	15000	0.010/0.016	1.2/2	0.004/0.006	49/53	3.76/4.10
20	18	9	13277/11507/8852	15000	0.012/0.016/0.020	1.2/2/2	0.004/0.008/0.010	79/84/88	8.54/9.23/9.57
45	40	27	57536/35406	15000	0.012/0.020	1.2/2	0.004/0.008	163/172	33.49/35.20
100	89	27	71698/59306	15000	0.016/0.020	1.2/2	0.006/0.010	265/287	79/85

Fittings: Hubs: Standard fit H7
Keyways: Standard fit JS9

Materials: Hubs made of aluminium
Metal bellows made of stainless steel

s
Special designs : Coupling completely made of stainless steel (on request)
Keyway acc. to DIN 6885-1 or ANSI B17.1



Check out the respective catalogue for further technical details

All technical details and information is non-binding and cannot be used as a basis for legal claims. The user is obligated to determine whether the represented products meet his requirements. We reserve the right at all times to carry out modifications in the interests of technical progress. Upon the issue of this catalogue all previous brochures and questionnaires on the products displayed are no longer valid.

RINGFEDER POWER TRANSMISSION USA CORPORATION

165 Carver Avenue, P.O. Box 691 Westwood, NJ 07675, USA · Toll Free: +1 888 746-4333 · Phone: +1 201 666 3320 · Fax: +1 201 664 6053

E-mail: sales.usa@ringfeder.com · E-mail: sales.usa@gerwah.com