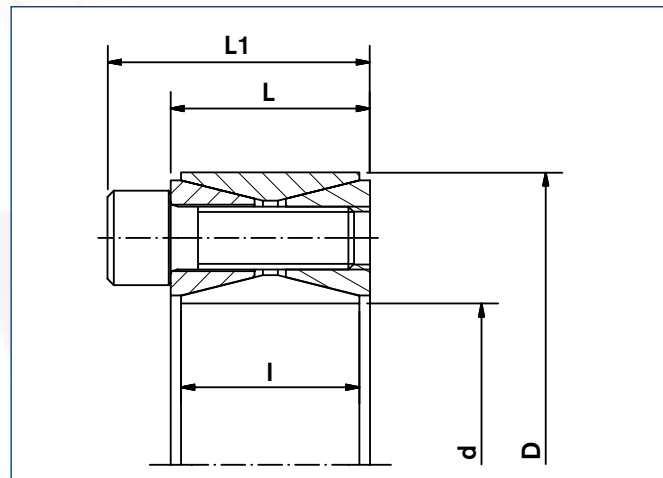


Locking Assembly RfN 7012/RfN 7012-IN · Typical installation



Locking Assembly RfN 7012/RfN 7012-IN · Dimensions

Characteristics

As the industry standard, the RfN 7012/RfN 7012-IN Locking Assembly is suitable for most applications.

Transmission of high loads – up to 4 RfN 7012/RfN 7012-IN Locking Assemblies can be used in series, the transmissible torques and axial forces are added. (Please contact our specialists for assistance).

Bending moment and radial loads – Combined loads can be transmitted. (Please contact our specialists for assistance).

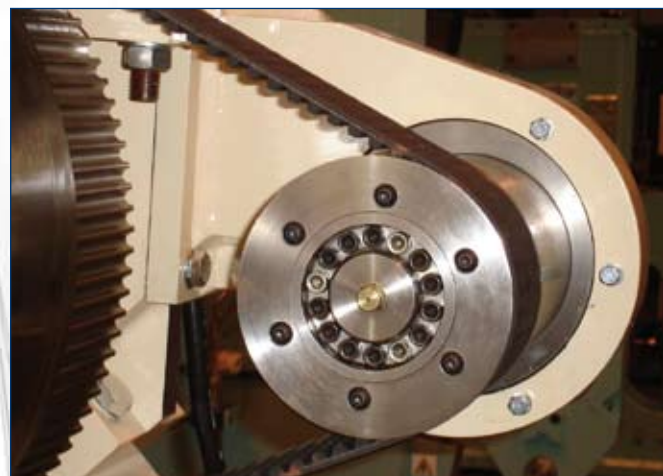
Simplified manufacture – RfN 7012/RfN 7012-IN Locking Assemblies can bridge large clearances without the loss of transmission values.

Low risk to contamination – During the tightening process the functional surfaces of the device are under pressure, sufficient enough to keep contaminants out, thereby preserving the integrity of the the device.

Adjustable transmission values – The screw tightening torque can be varied, thus allowing for different torque transmission values. RfN 7012/RfN 7012-IN Locking Assemblies can be tightened and released repeatedly.

Example applications:

sprockets, gears, coupling hubs, conveyor pulleys, idler wheels, sheaves



Locking Assembly RfN 7012/RfN 7012-IN · Belt pulley

| Locking Assembly dimensions | | | | | | | | Transmissible torques or axial forces | | Surface Pressure | | Locking screws DIN EN ISO 4762-12.9 | | | Weight | | min. D _N * | | | | |
|-----------------------------|--------|----------------|--------|----------------|-------|-------|----------------|---------------------------------------|-----------------|-------------------------|-----------------------|--|----------------|----|----------------|-----|-----------------------|-------------------------|--------|--------|-------|
| d x D | d | C ₁ | D | C ₂ | L | I | L ₁ | T | F _{ax} | Shaft P _w | Hub P _N | n | Thread | | T _A | WT | d _D | R _{p0.2} [psi] | | | |
| Inch | Inch | | | | | | | lb-ft | lbs | psi | | | mm | | lb-ft | lbs | mm | Inch | | | |
| | | | | | | | | | | | | | d _G | s | | | | | 36000 | 45000 | 62000 |
| 3/4 | 0.750 | +0 | 1.850 | -0 | 0.787 | 0.669 | 1.083 | 225 | 7200 | 35000 | 14200 | 8 | M6x18 | 5 | 13 | 0.5 | M8 | 2.565 | 2.395 | 2.227 | |
| 1 | 1.000 | -0.002 | 1.969 | +0.002 | 0.787 | 0.669 | 1.083 | 337 | 8088 | 33000 | 16800 | 9 | M6x18 | 5 | 13 | 0.6 | M8 | 2.915 | 2.679 | 2.454 | |
| 1 1/8 | 1.125 | | 2.165 | | 0.787 | 0.669 | 1.083 | 424 | 9045 | 30000 | 15600 | 10 | M6x18 | 5 | 13 | 0.7 | M8 | 3.108 | 2.878 | 2.655 | |
| 1 3/16 | 1.1875 | | 2.159 | | 0.813 | 0.669 | 1.108 | 445 | 8994 | 31000 | 17100 | 10 | M6x18 | 5 | 13 | 0.7 | M8 | 3.221 | 2.955 | 2.702 | |
| 1 1/4 | 1.250 | | 2.362 | | 0.787 | 0.669 | 1.083 | 459 | 8813 | 35000 | 18600 | 12 | M6x18 | 5 | 13 | 0.7 | M8 | 3.666 | 3.330 | 3.017 | |
| 1 3/8 | 1.375 | | 2.365 | | 0.776 | 0.669 | 1.071 | 622 | 10857 | 32000 | 18700 | 12 | M6x18 | 5 | 13 | 0.7 | M8 | 3.681 | 3.341 | 3.025 | |
| 1 7/16 | 1.4375 | | 2.559 | | 0.787 | 0.669 | 1.083 | 748 | 12488 | 35000 | 19700 | 15 | M6x18 | 5 | 13 | 0.8 | M8 | 4.092 | 3.689 | 3.318 | |
| 1 1/2 | 1.500 | +0 | 2.559 | -0 | 0.787 | 0.669 | 1.083 | 782 | 12512 | 33500 | 19700 | 15 | M6x18 | 5 | 13 | 0.8 | M8 | 4.092 | 3.689 | 3.318 | |
| 1 5/8 | 1.625 | -0.0025 | 2.953 | +0.0025 | 0.945 | 0.787 | 1.319 | 1273 | 18801 | 39000 | 21500 | 12 | M8x22 | 6 | 30 | 1.3 | M10 | 4.968 | 4.417 | 3.926 | |
| 1 11/16 | 1.6875 | | 2.953 | | 0.945 | 0.787 | 1.319 | 1320 | 18773 | 34000 | 19500 | 12 | M8x22 | 6 | 30 | 1.3 | M10 | 4.696 | 4.240 | 3.819 | |
| 1 3/4 | 1.750 | | 2.953 | | 0.945 | 0.787 | 1.319 | 1368 | 18761 | 36000 | 21400 | 12 | M8x22 | 6 | 30 | 1.3 | M10 | 4.953 | 4.408 | 3.921 | |
| 1 7/8 | 1.875 | | 3.150 | | 0.945 | 0.787 | 1.319 | 1454 | 18611 | 34000 | 20300 | 12 | M8x22 | 6 | 30 | 1.4 | M10 | 5.122 | 4.597 | 4.119 | |
| 1 15/16 | 1.9375 | | 3.150 | | 0.945 | 0.787 | 1.319 | 1498 | 18556 | 32000 | 19700 | 12 | M8x22 | 6 | 30 | 1.4 | M10 | 5.037 | 4.541 | 4.085 | |
| 2 | 2.000 | | 3.346 | | 0.945 | 0.787 | 1.319 | 1808 | 21696 | 37000 | 22200 | 14 | M8x22 | 6 | 30 | 1.4 | M10 | 5.744 | 5.079 | 4.493 | |
| 2 1/8 | 2.125 | | 3.346 | | 0.945 | 0.787 | 1.319 | 1919 | 21673 | 35000 | 22300 | 14 | M8x22 | 6 | 30 | 1.4 | M10 | 5.761 | 5.090 | 4.499 | |
| 2 3/16 | 2.1875 | | 3.543 | | 0.945 | 0.787 | 1.319 | 1971 | 21625 | 34000 | 21000 | 14 | M8x22 | 6 | 30 | 1.5 | M10 | 5.875 | 5.245 | 4.678 | |
| 2 1/4 | 2.250 | | 3.543 | | 0.945 | 0.787 | 1.319 | 2023 | 21579 | 32000 | 20400 | 14 | M8x22 | 6 | 30 | 1.5 | M10 | 5.777 | 5.181 | 4.639 | |
| 2 3/8 | 2.375 | | 3.531 | | 0.996 | 0.787 | 1.370 | 2127 | 21494 | 30500 | 20600 | 14 | M8x22 | 6 | 30 | 1.5 | M10 | 5.790 | 5.184 | 4.636 | |
| 2 7/16 | 2.4375 | | 3.740 | | 0.945 | 0.787 | 1.319 | 2497 | 24586 | 34000 | 22200 | 16 | M8x22 | 6 | 30 | 1.6 | M10 | 6.421 | 5.677 | 5.022 | |
| 2 1/2 | 2.500 | | 3.740 | | 0.945 | 0.787 | 1.319 | 2556 | 24538 | 33000 | 22100 | 16 | M8x22 | 6 | 30 | 1.6 | M10 | 6.402 | 5.665 | 5.015 | |
| 2 9/16 | 2.5625 | +0 | 3.737 | -0 | 0.959 | 0.787 | 1.333 | 2617 | 24510 | 32000 | 22000 | 16 | M8x22 | 6 | 30 | 1.6 | M10 | 6.378 | 5.649 | 5.004 | |
| 2 5/8 | 2.625 | -0.003 | 4.331 | +0.003 | 1.102 | 0.945 | 1.555 | 3775 | 34514 | 37000 | 22500 | 14 | M10x25 | 8 | 61 | 2.8 | M12 | 7.502 | 6.616 | 5.840 | |
| 2 11/16 | 2.6875 | | 4.331 | | 1.102 | 0.945 | 1.555 | 3866 | 34524 | 36000 | 22400 | 14 | M10x25 | 8 | 61 | 2.8 | M12 | 7.479 | 6.602 | 5.832 | |
| 2 3/4 | 2.750 | | 4.337 | | 1.079 | 0.945 | 1.532 | 4017 | 35057 | 36000 | 22900 | 14 | M10x25 | 8 | 61 | 2.8 | M12 | 7.602 | 6.681 | 5.881 | |
| 2 7/8 | 2.875 | | 4.528 | | 1.102 | 0.945 | 1.555 | 4175 | 34852 | 34500 | 22000 | 14 | M10x25 | 8 | 61 | 2.9 | M12 | 7.728 | 6.844 | 6.063 | |
| 2 15/16 | 2.9375 | | 4.528 | | 1.102 | 0.945 | 1.555 | 4262 | 34821 | 34000 | 22100 | 14 | M10x25 | 8 | 61 | 2.9 | M12 | 7.751 | 6.859 | 6.071 | |
| 3 | 3.000 | | 4.724 | | 1.102 | 0.945 | 1.555 | 4332 | 34656 | 33000 | 21000 | 14 | M10x25 | 8 | 61 | 3.1 | M12 | 7.834 | 6.993 | 6.237 | |
| 3 1/8 | 3.125 | | 4.724 | | 1.102 | 0.945 | 1.555 | 4515 | 34675 | 31000 | 20600 | 14 | M10x25 | 8 | 61 | 3.1 | M12 | 7.746 | 6.936 | 6.203 | |
| 3 1/4 | 3.250 | | 4.921 | | 1.102 | 0.945 | 1.555 | 5355 | 39545 | 33000 | 21800 | 16 | M10x25 | 8 | 61 | 3.3 | M12 | 8.350 | 7.407 | 6.571 | |
| 3 3/8 | 3.375 | | 4.921 | | 1.102 | 0.945 | 1.555 | 5558 | 39524 | 34000 | 23400 | 16 | M10x25 | 8 | 61 | 3.3 | M12 | 8.757 | 7.663 | 6.720 | |
| 3 7/16 | 3.4375 | | 5.118 | | 1.102 | 0.945 | 1.555 | 5601 | 39105 | 32000 | 21500 | 16 | M10x25 | 8 | 61 | 3.4 | M12 | 8.609 | 7.655 | 6.805 | |
| 3 1/2 | 3.500 | | 5.118 | | 1.102 | 0.945 | 1.555 | 5706 | 39127 | 31000 | 21200 | 16 | M10x25 | 8 | 61 | 3.4 | M12 | 8.536 | 7.608 | 6.776 | |
| 3 3/4 | 3.750 | +0 | 5.305 | -0.0035 | 1.142 | 0.945 | 1.594 | 6914 | 44250 | 34000 | 24100 | 18 | M10x25 | 8 | 61 | 3.6 | M12 | 9.646 | 8.387 | 7.317 | |
| 3 15/16 | 3.3975 | | 5.708 | | 1.301 | 1.024 | 1.852 | 8402 | 51212 | 33000 | 22800 | 14 | M12x30 | 10 | 107 | 4.4 | M14 | 9.975 | 8.775 | 7.729 | |
| 4 | 4.000 | | 5.843 | | 1.299 | 1.024 | 1.850 | 8489 | 50934 | 32000 | 22000 | 14 | M12x30 | 10 | 107 | 4.4 | M14 | 9.973 | 8.832 | 7.823 | |
| 4 7/16 | 4.4375 | | 6.496 | | 1.299 | 1.024 | 1.850 | 10498 | 56778 | 34000 | 23300 | 16 | M12x30 | 10 | 107 | 5.2 | M14 | 11.525 | 10.093 | 8.859 | |
| 4 1/2 | 4.500 | | 6.496 | | 1.299 | 1.024 | 1.850 | 10652 | 56811 | 33000 | 22900 | 16 | M12x30 | 10 | 107 | 5.2 | M14 | 11.386 | 10.007 | 8.809 | |
| 4 15/16 | 4.9375 | | 7.087 | | 1.496 | 1.339 | 2.047 | 14493 | 70447 | 29000 | 20300 | 20 | M12x35 | 10 | 107 | 7.7 | M14 | 11.523 | 10.342 | 9.267 | |
| 5 | 5.000 | | 7.087 | | 1.496 | 1.339 | 2.047 | 14672 | 70426 | 29000 | 20500 | 20 | M12x35 | 10 | 107 | 7.7 | M14 | 11.588 | 10.384 | 9.293 | |
| 5 1/2 | 5.500 | +0 | 7.492 | -0 | 1.449 | 1.339 | 2.000 | 17804 | 77690 | 29000 | 21300 | 22 | M12x35 | 10 | 107 | 8.5 | M14 | 12.531 | 11.160 | 9.934 | |
| 6 | 6.000 | -0.004 | 8.268 | +0.004 | 1.496 | 1.339 | 2.047 | 22762 | 91048 | 30500 | 22200 | 26 | M12x35 | 10 | 107 | 9.5 | M14 | 14.194 | 12.550 | 11.102 | |
| 6 1/2 | 6.500 | | 8.858 | | 1.732 | 1.496 | 2.362 | 28336 | 104625 | 29000 | 21300 | 22 | M14x40 | 12 | 170 | 13 | M14 | 14.816 | 13.195 | 11.745 | |
| 7 | 7.000 | | 9.252 | | 1.732 | 1.496 | 2.362 | 33220 | 113897 | 29000 | 22000 | 24 | M14x40 | 12 | 170 | 13 | M14 | 15.791 | 13.985 | 12.388 | |
| 7 1/2 | 7.500 | +0 | 9.823 | -0 | 2.126 | 1.811 | 2.756 | 41369 | 132381 | 26500 | 20300 | 28 | M14x45 | 12 | 170 | 18 | M14 | 15.972 | 14.334 | 12.844 | |
| 7 7/8 | 7.875 | -0.0045 | 10.235 | +0.0045 | 2.051 | 1.811 | 2.681 | 46707 | 142345 | 26500 | 20400 | 30 | M14x45 | 12 | 170 | 19 | M14 | 16.688 | 14.966 | 13.402 | |

* B ≥ 2 l necessary

To continue see next page

| Locking Assembly dimensions | | | | | | | Transmissible torques or axial forces | | Surface Pressure | | Locking screws DIN EN ISO 4762-12.9 | | | Weight | min. D _N * | | | | |
|-----------------------------|--------|----------------|--------|----------------|-------|-------|---------------------------------------|--------|------------------|----------------------|-------------------------------------|----|-----------------------|----------------|-----------------------|------------|--------|--------|------------------|
| d x D | d | C ₁ | D | C ₂ | L | I | L ₁ | T | F _{ax} | Shaft P _w | Hub P _N | n | Thread d _G | T _A | WT | Rp0,2[psi] | | | T _{max} |
| Inch | | | | | | | lb-ft | lbs | psi | | | mm | lb-ft | lbs | Inch | | | lb-ft | |
| mm | | | | | | | | | | | | | | | | | | | |
| 19 x 47 | 0.748 | | 1.850 | | 0.787 | 0.669 | 1.083 | 229 | 6745 | 39162 | 15955 | 8 | M6 x 18 | 13 | 0.5 | 2.680 | 2.476 | 2.280 | 258 |
| 20 x 47 | 0.787 | 0 | 1.850 | 0 | 0.787 | 0.669 | 1.083 | 236 | 6745 | 37712 | 15955 | 8 | M6 x 18 | 13 | 0.5 | 2.680 | 2.476 | 2.280 | 273 |
| 22 x 47 | 0.866 | -0.002 | 1.850 | +0.002 | 0.787 | 0.669 | 1.083 | 266 | 6745 | 34811 | 15955 | 8 | M6 x 18 | 13 | 0.5 | 2.680 | 2.476 | 2.280 | 302 |
| 24 x 50 | 0.945 | | 1.969 | | 0.787 | 0.669 | 1.083 | 317 | 6745 | 34811 | 17405 | 9 | M6 x 18 | 13 | 0.6 | 2.961 | 2.711 | 2.474 | 369 |
| 25 x 50 | 0.984 | | 1.969 | | 0.787 | 0.669 | 1.083 | 339 | 6745 | 33360 | 17405 | 9 | M6 x 18 | 13 | 0.6 | 2.961 | 2.711 | 2.474 | 384 |
| 28 x 55 | 1.102 | | 2.165 | | 0.787 | 0.669 | 1.083 | 420 | 8993 | 33360 | 17405 | 9 | M6 x 18 | 13 | 0.7 | 3.256 | 2.981 | 2.721 | 435 |
| 30 x 55 | 1.181 | | 2.165 | | 0.787 | 0.669 | 1.083 | 443 | 8993 | 30459 | 17405 | 9 | M6 x 18 | 13 | 0.6 | 3.256 | 2.981 | 2.721 | 465 |
| 32 x 60 | 1.260 | | 2.362 | | 0.787 | 0.669 | 1.083 | 561 | 11241 | 33360 | 18856 | 12 | M6 x 18 | 13 | 0.7 | 3.691 | 3.347 | 3.028 | 664 |
| 35 x 60 | 1.378 | | 2.362 | | 0.787 | 0.669 | 1.083 | 627 | 11241 | 31910 | 18856 | 12 | M6 x 18 | 13 | 0.7 | 3.691 | 3.347 | 3.028 | 723 |
| 38 x 65 | 1.496 | 0 | 2.559 | 0 | 0.787 | 0.669 | 1.083 | 775 | 13489 | 33360 | 18856 | 15 | M6 x 18 | 13 | 0.8 | 3.999 | 3.627 | 3.280 | 959 |
| 40 x 65 | 1.575 | -0.0025 | 2.559 | +0.0025 | 0.787 | 0.669 | 1.083 | 819 | 13489 | 31910 | 18856 | 15 | M6 x 18 | 13 | 0.7 | 3.999 | 3.627 | 3.280 | 1033 |
| 42 x 75 | 1.654 | | 2.953 | | 0.945 | 0.787 | 1.319 | 1291 | 17986 | 39162 | 21757 | 12 | M8 x 22 | 30 | 1.3 | 5.005 | 4.441 | 3.940 | 1549 |
| 45 x 75 | 1.772 | | 2.953 | | 0.945 | 0.787 | 1.319 | 1387 | 17986 | 36261 | 21757 | 12 | M8 x 22 | 30 | 1.3 | 5.005 | 4.441 | 3.940 | 1697 |
| 48 x 80 | 1.890 | | 3.150 | | 0.945 | 0.787 | 1.319 | 1468 | 17986 | 33360 | 20306 | 12 | M8 x 22 | 30 | 1.4 | 5.123 | 4.597 | 4.119 | 1770 |
| 50 x 80 | 1.969 | | 3.150 | | 0.945 | 0.787 | 1.319 | 1527 | 17986 | 31910 | 20306 | 12 | M8 x 22 | 30 | 1.3 | 5.123 | 4.597 | 4.119 | 1844 |
| 55 x 85 | 2.165 | | 3.346 | | 0.945 | 0.787 | 1.319 | 1955 | 22482 | 33360 | 21757 | 14 | M8 x 22 | 30 | 1.4 | 5.671 | 5.032 | 4.465 | 2434 |
| 60 x 90 | 2.362 | 0 | 3.543 | 0 | 0.945 | 0.787 | 1.319 | 2132 | 22482 | 30459 | 20306 | 14 | M8 x 22 | 30 | 1.5 | 5.762 | 5.171 | 4.633 | 2655 |
| 65 x 95 | 2.559 | 0 | 3.740 | 0 | 0.945 | 0.787 | 1.319 | 2626 | 24730 | 31910 | 21757 | 16 | M8 x 22 | 30 | 1.6 | 6.338 | 5.624 | 4.991 | 3246 |
| 70 x 110 | 2.756 | -0.003 | 4.331 | +0.003 | 1.102 | 0.945 | 1.555 | 4020 | 35971 | 36261 | 21757 | 14 | M10 x 25 | 61 | 2.8 | 7.340 | 6.513 | 5.779 | 4942 |
| 75 x 115 | 2.953 | | 4.528 | | 1.102 | 0.945 | 1.555 | 4286 | 35971 | 33360 | 21757 | 14 | M10 x 25 | 61 | 2.9 | 7.674 | 6.809 | 6.042 | 5311 |
| 80 x 120 | 3.150 | | 4.724 | | 1.102 | 0.945 | 1.555 | 4544 | 35971 | 30459 | 20306 | 14 | M10 x 25 | 61 | 3.1 | 7.682 | 6.894 | 6.178 | 5680 |
| 85 x 125 | 3.346 | 0 | 4.921 | 0 | 1.102 | 0.945 | 1.555 | 5495 | 40468 | 33360 | 21757 | 16 | M10 x 25 | 61 | 3.3 | 8.340 | 7.400 | 6.567 | 6860 |
| 90 x 130 | 3.543 | 0 | 5.118 | 0 | 1.102 | 0.945 | 1.555 | 5768 | 40468 | 30459 | 21757 | 16 | M10 x 25 | 61 | 3.4 | 8.674 | 7.697 | 6.829 | 7303 |
| 95 x 135 | 3.740 | 0 | 5.315 | 0 | 1.102 | 0.945 | 1.555 | 6904 | 44964 | 33360 | 23207 | 18 | M10 x 25 | 61 | 3.6 | 9.403 | 8.242 | 7.239 | 8630 |
| 100 x 145 | 3.937 | -0.0035 | 5.709 | +0.0035 | 1.299 | 1.024 | 1.850 | 8188 | 49460 | 33360 | 23207 | 14 | M12 x 30 | 107 | 4.4 | 10.100 | 8.853 | 7.775 | 10474 |
| 110 x 155 | 4.331 | | 6.102 | | 1.299 | 1.024 | 1.850 | 8984 | 49460 | 30459 | 21757 | 14 | M12 x 30 | 107 | 4.7 | 10.341 | 9.176 | 8.142 | 11655 |
| 120 x 165 | 4.724 | | 6.496 | | 1.299 | 1.024 | 1.850 | 11212 | 58453 | 31910 | 23207 | 16 | M12 x 30 | 107 | 5.2 | 11.492 | 10.073 | 8.847 | 14531 |
| 130 x 180 | 5.118 | 0 | 7.087 | 0 | 1.496 | 1.339 | 2.047 | 15048 | 71942 | 27559 | 18856 | 20 | M12 x 35 | 107 | 7.7 | 11.076 | 10.044 | 9.084 | 19621 |
| 140 x 190 | 5.512 | 0 | 7.480 | 0 | 1.496 | 1.339 | 2.047 | 17851 | 78687 | 27559 | 21757 | 22 | M12 x 35 | 107 | 8.5 | 12.677 | 11.249 | 9.981 | 23235 |
| 150 x 200 | 5.906 | 0 | 7.874 | 0 | 1.496 | 1.339 | 2.047 | 20654 | 85432 | 29009 | 21757 | 24 | M12 x 35 | 107 | 9.0 | 13.344 | 11.841 | 10.507 | 27145 |
| 160 x 210 | 6.299 | -0.004 | 8.268 | +0.004 | 1.496 | 1.339 | 2.047 | 23973 | 89928 | 29009 | 21757 | 26 | M12 x 35 | 107 | 9.5 | 14.012 | 12.434 | 11.033 | 31423 |
| 170 x 225 | 6.693 | | 8.858 | | 1.732 | 1.496 | 2.362 | 29284 | 105665 | 27559 | 21757 | 22 | M14 x 40 | 170 | 13 | 15.012 | 13.321 | 11.820 | 38947 |
| 180 x 235 | 7.087 | | 9.252 | | 1.732 | 1.496 | 2.362 | 33710 | 112410 | 29009 | 21757 | 24 | M14 x 40 | 170 | 13 | 15.680 | 13.914 | 12.346 | 44996 |
| 190 x 250 | 7.480 | 0 | 9.843 | 0 | 2.047 | 1.811 | 2.677 | 41529 | 134892 | 26108 | 20306 | 28 | M14 x 45 | 170 | 18 | 16.007 | 14.365 | 12.872 | 55396 |
| 200 x 260 | 7.874 | 0 | 10.236 | 0 | 2.047 | 1.811 | 2.677 | 46840 | 143885 | 26108 | 20306 | 30 | M14 x 45 | 170 | 19 | 16.646 | 14.938 | 13.386 | 62478 |
| 220 x 285 | 8.661 | -0.0045 | 11.220 | +0.0045 | 2.205 | 1.969 | 2.913 | 60339 | 168615 | 26108 | 20306 | 26 | M16 x 50 | 262 | 25 | 18.246 | 16.375 | 14.672 | 80550 |
| 240 x 305 | 9.449 | | 12.008 | | 2.205 | 1.969 | 2.913 | 75903 | 193345 | 27559 | 21757 | 30 | M16 x 50 | 262 | 27 | 20.350 | 18.058 | 16.023 | 101351 |
| 260 x 325 | 10.236 | 0 | 12.795 | 0 | 2.205 | 1.969 | 2.913 | 92204 | 215827 | 29009 | 23207 | 34 | M16 x 50 | 262 | 29 | 22.636 | 19.841 | 17.426 | 124439 |
| 280 x 355 | 11.024 | -0.005 | 13.976 | +0.005 | 2.598 | 2.362 | 3.406 | 112858 | 247302 | 24658 | 20306 | 32 | M18 x 60 | 358 | 42 | 22.728 | 20.397 | 18.276 | 154239 |
| 300 x 375 | 11.811 | | 14.764 | | 2.598 | 2.362 | 3.406 | 134987 | 274281 | 26108 | 20306 | 36 | M18 x 60 | 358 | 45 | 24.010 | 21.547 | 19.307 | 185958 |
| 320 x 405 | 12.598 | 0 | 15.945 | 0 | 3.071 | 2.835 | 3.957 | 184409 | 350719 | 26108 | 20306 | 36 | M20 x 70 | 509 | 65 | 25.930 | 23.270 | 20.851 | 252124 |
| 340 x 425 | 13.386 | 0 | 16.732 | 0 | 3.071 | 2.835 | 3.957 | 196580 | 350719 | 24658 | 20306 | 36 | M20 x 70 | 509 | 69 | 27.210 | 24.419 | 21.880 | 267909 |
| 360 x 455 | 14.173 | 0 | 17.913 | 0 | 3.543 | 3.307 | 4.567 | 258541 | 436151 | 24658 | 20306 | 36 | M22 x 80 | 686 | 93 | 29.131 | 26.142 | 23.425 | 350303 |
| 380 x 475 | 14.961 | -0.0055 | 18.701 | +0.0055 | 3.543 | 3.307 | 4.567 | 270712 | 433903 | 23207 | 18856 | 36 | M22 x 80 | 686 | 97 | 29.227 | 26.503 | 23.971 | 369776 |
| 400 x 495 | 15.748 | | 19.488 | | 3.543 | 3.307 | 4.567 | 283252 | 431655 | 23207 | 18856 | 36 | M22 x 80 | 686 | 101 | 30.457 | 27.619 | 24.980 | 389250 |
| 420 x 515 | 16.535 | 0 | 20.276 | 0 | 3.543 | 3.307 | 4.567 | 328985 | 476619 | 23207 | 18856 | 40 | M22 x 80 | 686 | 110 | 31.688 | 28.735 | 25.990 | 454088 |
| 440 x 545 | 17.323 | 0 | 21.457 | 0 | 4.016 | 3.780 | 5.118 | 402011 | 555306 | 23207 | 18856 | 40 | M24 x 90 | 885 | 142 | 33.534 | 30.409 | 27.504 | 559275 |
| 460 x 565 | 18.110 | -0.006 | 22.244 | +0.006 | 4.016 | 3.780 | 5.118 | 416764 | 550809 | 21757 | 17405 | 40 | M24 x 90 | 885 | 149 | 33.451 | 30.630 | 27.954 | 584723 |
| 480 x 585 | 18.898 | 0 | 23.031 | 0 | 4.016 | 3.780 | 5.118 | 457334 | 580036 | 21757 | 17405 | 42 | M24 x 90 | 885 | 157 | 34.634 | 31.714 | 28.943 | 640636 |
| 500 x 605 | 19.685 | 0 | 23.819 | 0 | 4.016 | 3.780 | 5.118 | 494215 | 602518 | 21757 | 17405 | 44 | M24 x 90 | 885 | 160 | 35.819 | 32.799 | 29.933 | 699130 |
| 520 x 630 | 20.472 | 0 | 24.803 | 0 | 4.016 | 3.780 | 5.118 | 520033 | 609263 | 21032 | 17405 | 45 | M24 x 90 | 885 | 176 | 37.299 | 34.154 | 31.169 | 743610 |
| 540 x 650 | 21.260 | -0.007 | 25.591 | +0.007 | 4.016 | 3.780 | 5.118 | 539211 | 608813 | 20306 | 16680 | 45 | M24 x 90 | 885 | 181 | 37.767 | 34.742 | 31.845 | 772230 |
| 560 x 670 | 22.047 | | 26.378 | | 4.016 | 3.780 | 5.118 | 595271 | 647932 | 20306 | 17405 | 48 | M24 x 90 | 885 | 187 | 39.668 | 36.322 | 33.149 | 854181 |

| Locking Assembly dimensions | | | | | | | | Transmissible torques or axial forces | | Surface Pressure | | Locking screws DIN EN ISO 4762-12.9 | | | Weight | min. D _N * | | | |
|-----------------------------|--------|----------------|--------|----------------|-------|-------|----------------|---------------------------------------|-----------------|-------------------------|-----------------------|--|--------------------------|----------------|--------|---------------------------------|--------|--------|------------------|
| d x D | d | C ₁ | D | C ₂ | L | I | L ₁ | T | F _{ax} | Shaft P _w | Hub P _N | n | Thread d _G | T _A | WT | Rp0,2[psi] 36000 45000 62000 | | | T _{max} |
| mm | Inch | | | | | | | lb-ft | lbs | psi | | | mm | lb-ft | lbs | Inch | | | lb-ft |
| 580 x 690 | 22.835 | 0 | 27.165 | 0 | 4.016 | 3.780 | 5.118 | 640267 | 673561 | 21032 | 17405 | 50 | M24 x 90 | 885 | 194 | 40.851 | 37.406 | 34.138 | 921601 |
| 600 x 710 | 23.622 | -0.007 | 27.953 | +0.007 | 4.016 | 3.780 | 5.118 | 660921 | 671987 | 20306 | 16680 | 50 | M24 x 90 | 885 | 201 | 41.253 | 37.949 | 34.784 | 953319 |
| 620 x 730 | 24.409 | | 28.740 | | 4.016 | 3.780 | 5.118 | 708867 | 697617 | 20306 | 16680 | 52 | M24 x 90 | 885 | 205 | 42.414 | 39.017 | 35.764 | 1024501 |
| 640 x 750 | 25.197 | | 29.528 | | 4.016 | 3.780 | 5.118 | 759026 | 723022 | 20306 | 17405 | 54 | M24x90 | 885 | 212 | 44.405 | 40.660 | 37.107 | 1098265 |
| 660 x 770 | 25.984 | | 30.315 | | 4.016 | 3.780 | 5.118 | 809923 | 748201 | 20306 | 17405 | 56 | M24x90 | 885 | 218 | 45.588 | 41.744 | 38.096 | 1174536 |
| 680 x 790 | 26.772 | | 31.102 | | 4.016 | 3.780 | 5.118 | 832790 | 746853 | 19581 | 16680 | 56 | M24x90 | 885 | 225 | 45.900 | 42.224 | 38.703 | 1210164 |
| 700 x 810 | 27.559 | | 31.890 | | 4.016 | 3.780 | 5.118 | 916880 | 798786 | 20306 | 17405 | 60 | M24x90 | 885 | 229 | 47.957 | 43.912 | 40.076 | 1334677 |
| 720 x 830 | 28.346 | 0 | 32.677 | 0 | 4.016 | 3.780 | 5.118 | 941222 | 1247077 | 19581 | 17405 | 60 | M24x90 | 885 | 236 | 49.140 | 44.996 | 41.065 | 1372812 |
| 740 x 850 | 29.134 | -0.008 | 33.465 | +0.008 | 4.016 | 3.780 | 5.118 | 998020 | 822617 | 19581 | 17405 | 62 | M24x90 | 885 | 243 | 50.325 | 46.081 | 42.055 | 1458009 |
| 760 x 870 | 29.922 | | 34.252 | | 4.016 | 3.780 | 5.118 | 1056293 | 847572 | 19581 | 17405 | 64 | M24x90 | 885 | 249 | 51.509 | 47.165 | 43.044 | 1545714 |
| 780 x 890 | 30.709 | | 35.039 | | 4.016 | 3.780 | 5.118 | 1099814 | 859487 | 19581 | 17405 | 65 | M24x90 | 885 | 256 | 52.692 | 48.249 | 44.033 | 1611142 |
| 800 x 910 | 31.496 | | 35.827 | | 4.016 | 3.780 | 5.118 | 1143334 | 871403 | 19581 | 17405 | 66 | M24x90 | 885 | 260 | 53.877 | 49.334 | 45.023 | 1677898 |
| 820 x 930 | 32.283 | | 36.614 | | 4.016 | 3.780 | 5.118 | 1205295 | 896358 | 19581 | 17405 | 68 | M24x90 | 885 | 267 | 55.061 | 50.417 | 46.012 | 1771947 |
| 840 x 950 | 33.071 | | 37.402 | | 4.016 | 3.780 | 5.118 | 1269470 | 921313 | 19581 | 17405 | 70 | M24x90 | 885 | 273 | 56.246 | 51.503 | 47.002 | 1868577 |
| 860 x 970 | 33.858 | | 38.189 | | 4.016 | 3.780 | 5.118 | 1334382 | 946268 | 19581 | 17405 | 72 | M24x90 | 885 | 280 | 57.429 | 52.586 | 47.991 | 1967715 |
| 880 x 990 | 34.646 | | 38.976 | | 4.016 | 3.780 | 5.118 | 1401506 | 971223 | 19581 | 17405 | 74 | M24x90 | 885 | 284 | 58.613 | 53.670 | 48.980 | 2069361 |
| 900 x 1010 | 35.433 | 0 | 39.764 | 0 | 4.016 | 3.780 | 5.118 | 1450928 | 982914 | 19581 | 17405 | 75 | M24x90 | 885 | 291 | 59.798 | 54.755 | 49.971 | 2145042 |
| 920 x 1030 | 36.220 | -0.009 | 40.551 | +0.009 | 4.016 | 3.780 | 5.118 | 1501087 | 994604 | 19581 | 17405 | 76 | M24x90 | 885 | 298 | 60.981 | 55.839 | 50.960 | 2221904 |
| 940 x 1050 | 37.008 | | 41.339 | | 4.016 | 3.780 | 5.118 | 1571900 | 1019559 | 19581 | 17405 | 78 | M24x90 | 885 | 304 | 62.166 | 56.924 | 51.950 | 2329967 |
| 960 x 1070 | 37.795 | | 42.126 | | 4.016 | 3.780 | 5.118 | 1644188 | 1044290 | 19581 | 17405 | 80 | M24x90 | 885 | 309 | 63.350 | 58.007 | 52.939 | 2440539 |
| 980 x 1090 | 38.583 | | 42.913 | | 4.016 | 3.780 | 5.118 | 1697298 | 1055980 | 18856 | 17405 | 81 | M24x90 | 885 | 315 | 64.533 | 59.091 | 53.928 | 2522564 |
| 1000 x 1110 | 39.370 | | 43.701 | | 4.016 | 3.780 | 5.118 | 1751145 | 1067671 | 18856 | 17405 | 82 | M24x90 | 885 | 322 | 65.718 | 60.176 | 54.918 | 2605843 |

■ Mounting of Locking Assembly

The Locking Assemblies are supplied slightly oiled and ready-to-use. The values for T, F_{ax}, P_w and P_N apply to Locking Assemblies installed in oiled condition.

■ Surface finishes

For shafts and hub bores

R_a = 125 RMS

■ Tolerances

We recommend the following mounting tolerances

shaft: k9-h9 · hub: N9-H9 - see table above

shaft: k11-h11 · hub: N11-H11

To avoid deformation of the relatively thickwalled thrust rings, the Locking Assembly should be located as symmetrically as possible between shaft and hub bore. If the shaft is smaller than nominal d, the bore should exceed nominal D to the same extent and vice versa. The true run-out quality is determined by the direct centering between shaft and hub.

■ Location of several Locking Assemblies RfN 7012

If several Locking Assemblies are to be installed, the transmission values of the table can be added when the Locking Assemblies are located within a distance of 4 x L₁.

■ Change of screw tightening torques

The Locking Assemblies are equipped with 12.9 grade screws. A reduction of the screw tightening torque is possible. The lowest allowable screw tightening torque is approximately 50% of T_A. There is an approximate linear relationship between T, T_A, F_{ax}, P_w and P_N.

■ Auxiliary Threads

To facilitate removal, the front thrust rings have auxiliary threads for pull-out screws.

* B ≥ 2 l necessary

To continue see next page

Explanations to tables

d, D, L, l, L_1 = Basic dimensions, Locking Assemblies not tightened

T = transmissible torque

F_{ax} = transmissible axial force

p_W = surface pressure between Locking Assembly and shaft

p_N = surface pressure between Locking Assembly and hub

n = fastener quantity

d_G = clamping thread

d_D = metric pullout thread dia.

T_A = maximum tightening torque for the screws considered in order to determine the values T, F_{ax}, p_W and p_N

D_N = minimum required outside hub diameter

$R_{p0,2}$ = minimum required yield point of hub material

T_{max} = maximum theoretical transmissible torque

B = minimum hub width (calculation formula at www.ringfeder.com)

C_1 = Shaft Tolerances

C_2 = Bore Tolerances

s = metric hex key size (across flats)



Weitere technische Hinweise befinden sich im jeweiligen Katalog.

Alle technischen Daten und Hinweise sind unverbindlich. Rechtsansprüche können daraus nicht abgeleitet werden. Der Anwender ist grundsätzlich verpflichtet zu prüfen, ob die dargestellten Produkte seinen Anforderungen genügen. Änderungen, die dem technischen Fortschritt dienen, behalten wir uns jederzeit vor. Mit Erscheinen dieses Kataloges werden alle älteren Prospekte und Fragebögen zu den gezeigten Produkten ungültig.

Check out the respective catalogue for further technical details

All technical details and information is non-binding and cannot be used as a basis for legal claims. The user is obligated to determine whether the represented products meet his requirements. We reserve the right at all times to carry out modifications in the interests of technical progress. Upon the issue of this catalogue all previous brochures and questionnaires on the products displayed are no longer valid.

RINGFEDER POWER TRANSMISSION GMBH

Werner-Heisenberg-Straße 18, D-64823 Groß-Umstadt, Germany · Phone: +49 (0) 6078 9385-0 · Fax: +49 (0) 6078 9385-100
E-mail: sales.international@ringfeder.com · E-mail: sales.international@gerwah.com

RINGFEDER POWER TRANSMISSION USA CORPORATION

165 Carver Avenue, P.O. Box 691 Westwood, NJ 07675, USA · Toll Free: +1 888 746-4333 · Phone: +1 201 666 3320
Fax: +1 201 664 6053 · E-mail: sales.usa@ringfeder.com · E-mail: sales.usa@gerwah.com

RINGFEDER POWER TRANSMISSION INDIA PRIVATE LIMITED

Plot No. 4, Door No. 220, Mount - Poonamallee Road, Kattupakkam, Chennai – 600 056, India
Phone: +91 (0) 44-2679-1411 · Fax: +91 (0) 44-2679-1422 · E-mail: sales.india@ringfeder.com · E-mail: sales.india@gerwah.com

KUNSHAN RINGFEDER POWER TRANSMISSION COMPANY LIMITED

German Industry Park, No. 508 Hengguanjiang Road, Zhangpu Town 215321, Kunshan City, P.R. China
Phone: +86 (0) 512-5745-3960 · Fax: +86 (0) 512-5745-3961 · E-mail sales.china@ringfeder.com